



IMPACT REPORT 2019

*Preparing our
community for the
future through
education and
evidence based
action.*



From the Executive Director

It's hot as I write this. 105 degrees Fahrenheit in Sonoma, after the hottest month globally on record. Change is constant; accelerated change can bring crisis.

Our Valley, like many places in the world, is facing extraordinary change that threatens some of the most treasured aspects of this beautiful place: iconic hillsides; streams and groundwater; open spaces that create rural character and separate town from nature.

Nature, too, is showing stress as the land adapts to a changing climate, and organisms designed for one set of conditions and relationships face an entirely different set. Our community, feeling both local and broader pressures, is pressed to its limits to find places for people to live, to integrate across classes and cultures, to build economic diversity as insurance in a changing economy.

In this time of extraordinary change, Sonoma Ecology Center strives to be level-headed and forward-looking, seeking the best advice, data, and options, as we work with our community to adapt to rapid change, helping to keep this place healthy and beautiful for the long term.

This commitment has produced some remarkable accomplishments over the years, including recent work to help our community respond to and heal from the fires, to create a forum for unrelated voices to come to the same table to work on common challenges, and to make an opportunity for our community to participate in the future of SDC—actions that led to our designation as a 2019 California Nonprofit of the Year.

Rapid change ahead will require the thoughtful, nimble, community-minded approach that we have demonstrated for decades. Even more, it will require partnerships that bring the many great talents of our community together to work toward critical solutions. Sonoma Ecology Center is poised to be your partner in these efforts. The future of SDC, of our water, of our beautiful landscapes, of our community, depend on all of us.

We are grateful that you've supported us along our journey so far, and look forward to working with you through these changing times toward a beautiful, sustainable Sonoma of the future.



Richard Dale, Executive Director



SONOMA ECOLOGY CENTER IS PROUD TO HAVE BEEN AWARDED



“I am constantly amazed at the impact Richard Dale and his group have had on our community. They’ve shown time and again their commitment to environmental stewardship while keeping the best interests of the public in mind. They are a model for others to follow. We’re fortunate to have them in our valley.”

— Senator Bill Dodd



Beautiful. Sustainable. Sonoma.

Sonoma Ecology Center works to address challenges related to open space, rural character, biodiversity, and climate, and strives for a better quality of life for all residents.

Since 1990, we've worked to increase appreciation and stewardship of Sonoma Valley's natural heritage and create measurable benefits in areas of land, water, climate change, and biodiversity.

Mission

Our mission is to work with our community to identify and lead actions that achieve and sustain ecological health in Sonoma Valley.

Vision

We envision a future where people, land, water, and wildlife thrive.

Values

Biodiversity

We value natural ecosystems and the diverse animals and plants they support.

Sustainability

We seek multi-benefit solutions to the environmental, social, and economic challenges facing our community.

Evidence-Based Action

We monitor our work and the environment to continually improve our programs and inform local and regional decisions.

Education

We have education programs for youth, teens, and adults to support an informed and empowered community.

Stewardship

We engage community members as partners in our work.

Collaborative Problem Solving

We strive to work with all stakeholders—including residents, government, agriculture, students, and businesses—to solve problems and build community.

Be the Change

Act locally to replicate globally. We learn from others and create and share models, techniques, and tools that others can use.

Responsive

We are an alert and agile organization, recognizing and responding to the opportunities and needs of Sonoma Valley.

2019 HIGHLIGHTS...

Over the last year, we celebrated landmark anniversaries of our two most beloved locations for community building, stewardship and education: Sugarloaf Ridge State Park, which had its 50th year open to the public, and Sonoma Garden Park, which had its 25th year as a city park.

K-12 Watershed Education Program

Our hands-on science education, summer camps and teen EnviroLeaders programs are planting the seeds of stewardship in future generations

Sugarloaf Ridge State Park

We're proud to be stewards of this local gem while working with Team Sugarloaf, volunteers, members and visitors as the park turned 50

Sonoma Garden Park

40 years after Pauline Bond donated 6 acres to the City of Sonoma, this unique jewel is still unlocking hearts and minds for young and old

From SDC to Eldridge

A new chapter begins as Sonoma Development Center wraps up its 128-year history – and we're at the table to make help guide the process

Sustainable Sonoma

More than 30 Sonoma Valley interest groups are tackling housing, working together to make this a sustainable community for all

Water Wise, Fire Smart, Wildlife Friendly

We are helping Californians manage their open spaces to achieve these powerful values and adapt to the many challenges of climate change

Watershed Education Program

We are planting the seeds of stewardship in future generations

“My 5th graders just completed the state science test. It was very challenging but MUCH of the material had been covered via your program.”

— Glendi Henion, 5th grade teacher
at Sassarini Elementary School

1,305 students
served

11 K-8 schools

Adele Harrison,
Altimira, Dunbar,
El Verano, Flowery,
Kenwood, Presentation,
Prestwood, Sassarini,
Sonoma Charter School,
St. Francis Solano

4 high schools

Creekside High School,
Hanna Boys Center,
Sonoma Valley High School,
Sonoma Academy

18 EnviroLeader

teens employed in our
environmental career
development and
leadership program.

7 Summer Science
Camps

150 participants

20 scholarships

“I felt more confident.”

— Backpacking camp participant



We teach over 1,300 students every year throughout Sonoma Valley. Our programs teach children and adults to care for our natural heritage through experiences that foster curiosity and reverence, and inspire action and care. We are helping to cultivate earth stewards — both young and old — who will be equipped to deal with the environmental challenges we face in the 21st century.

For example, our Climate Champions program focuses on climate change through a local lens. Students learn about the connections between earth systems, and how human impacts have altered these systems. They do hands-on science to monitor the Sonoma Creek watershed, and discuss local solutions to global issues.





"In the end
we will conserve only what we love;
we will love only what we understand; and
we will understand only what we are taught."

— Baba Dioum, 1968



**K-6 Watershed
Education**

**Summer Science
Camps**

EnviroLeaders

**Workshops &
Guided Hikes**

**California
Naturalist**



**Lifelong, Engaged
Stewards**



We are the primary provider of
environmental education in Sonoma Valley

We offer an environmental literacy pathway with a program that builds on itself year after year. Working with partners and building on our long-standing relationships with teachers, our network of environmental education teams provides outdoor educational experiences to every child at every grade level in Sonoma Valley at no cost to schools.



Early environmental education leads to
life-long stewardship

Our programs connect all age levels to their local place: the Sonoma Creek watershed. Elementary students explore natural phenomena through inquiry-based learning. Our Enviroleader youth employees get enriching career opportunities and direction, as future farmers and scientists about to enter the workforce. Life-long learners enjoy the pleasures of continued education through evening naturalist courses, seasonal outings, and volunteerism.

Sugarloaf Ridge State Park

Looking back on the 50th year of this local treasure with an eye to the future

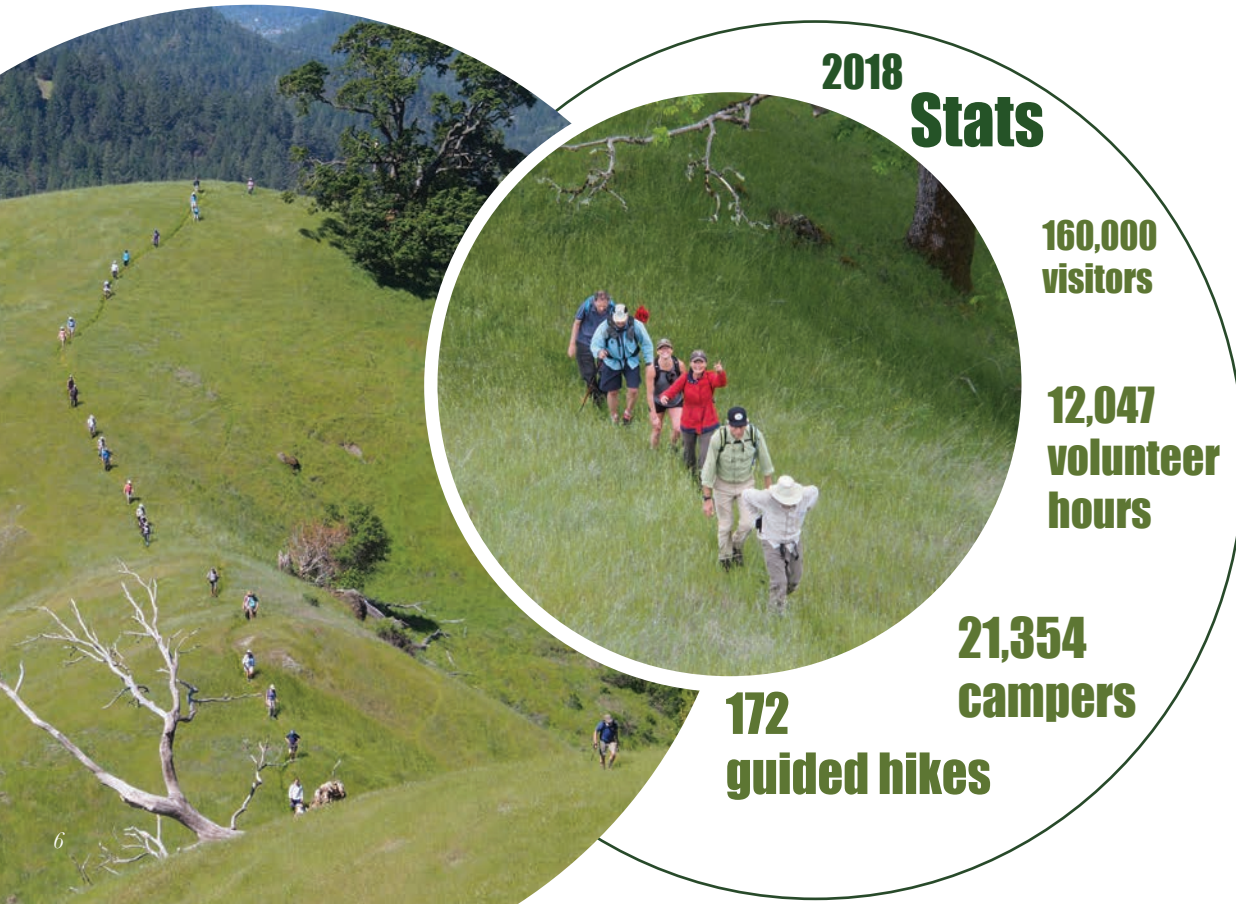
In 2012, Sonoma Ecology Center saved Sugarloaf Ridge State Park from closure by forming Team Sugarloaf, which took over day-to-day operations. The Park's 3,900 acres are the headwaters of Santa Rosa and Sonoma Creeks, the backbones of our local watershed.

Another milestone came in late 2017, when wildfire burned 80% of the park and forced its closure for months. Generous donations and tireless volunteers made it possible to fully reopen Sugarloaf in time for its 50th anniversary. Today we're expanding services again, with favorites such as ParksRx, Senderos Naturales, Summer Science Camps, Creekside Nature Hikes, Star Parties at Robert Ferguson Observatory, and much more.



“It was a landmark decision to pull together Team Sugarloaf to assume operations of the Park. We’d been involved with Sugarloaf for decades, helping with technical studies, restoration work, and its master plan, but we never dreamed of managing it. Only after its gates closed did we understand that it would take our community to reopen the park and keep it vibrant. So we did something unusual, gathering together several partners, each with unique strengths, so that together we could operate this large, complex park. The state has been a key partner in this success. It looks to have worked out well for everyone!”

— Richard Dale



Sonoma Garden Park

Celebrating the 25th year of
our beloved community park

Over 40 years ago, Pauline Bond donated 6.1 acres at 19996 7th Street East to the City of Sonoma. In 1993, Sonoma Ecology Center assumed care of the property, and set out to create a community gathering place where Sonoma Valley visitors and residents can experience local organic foods and cultivate an awareness of small-scale food production.

At Sonoma Garden Park, people connect with the natural world that sustains us, and to each other. The Garden Park's design creates learning opportunities to connect with others, and serene spaces to explore and enjoy.

Sonoma Garden Park is open daily to the public, with a seasonal Harvest Market, workshops, field trips, summer camps, volunteer days, community garden plots, and demonstration gardens. A 10-Year Master Plan update will enhance the Park's unique intersection of offerings.



Education

Over 1,100 Sonoma Valley students visit every year for science camps and class field trips.

Community

Community Garden Plots serve social gardeners, Latino families, seniors, and special needs gardeners.

Stewardship

Our volunteer workdays alone result in 200 locals providing over 3,000 hours of community service per year.

Gardens

Low Impact Design demonstration gardens model sustainable farming methods while growing organic produce.



From SDC to Eldridge

The future of Sonoma Development Center in Eldridge is a unique opportunity in Sonoma Valley where health, social justice, economic, and environmental issues intersect. We have been closely involved in discussions about SDC's future leading up to its closure, ensuring that our community has a voice in how the 860 acres and the 135-year-old facility will be repurposed.

This investment is paying off. After helping with studies of the property, community workshops, close communication with county and state officials, and collaboration with partners in the SDC Coalition, we co-created the current opportunity, in which the State of California is funding a community-driven Specific Plan for SDC's land use, permanent protection of its open space, and creative reuse options here in the heart of Sonoma Valley.



A Specific Plan will ensure future site development is compatible with Sonoma Valley communities and needs.



Nearly 700 acres of critical open space, part of the Sonoma Valley Wildlife Corridor, is protected and will be added to local parks.



During planning, the state will fund maintenance, security, and fire protection for the main campus.



Sustainable Sonoma

Sustainable Sonoma is a forum launched by Sonoma Ecology Center where a diverse group of people—representing business, environment, and social justice—are taking action on solutions to our community’s biggest challenges.

What does Sustainable Sonoma do?

Identify and tackle complex community problems with an explicit value of sustainability, finding solutions that have the greatest buy-in and also advance environmental, economic, and equity goals.

Facilitate diplomacy across key sectors within the community, linking together organizations and leaders to solve complex community problems.

Shift public opinion and change mental models to advance progress and solutions for complex community problems.

Develop tools that inform decisions on new projects, policies and actions to address complex community problems.

Identify and link investment opportunities with new projects or programs that align with sustainability values and win-win-win solutions.

“Sustainable Sonoma brought together a panel, that had the fire department, the schools, the hospital, an array of people from the service sector, and it was a revelation. You listened and you just went, ‘Oh my God.’ I mean, only a third of the firefighters can afford to live here. So now, at least, we’re having awareness of the nature of this and how it affects everything.”

– Katherine Fulton, Co-Author, Hidden in Plain Sight in Valley of the Moon Magazine



✓ **20 Listening Sessions**
on what Sonoma Valley residents and workers want for the future of their community

✓ **Voices of Sonoma Valley Report**
concludes that housing affordability is the community’s #1 issue

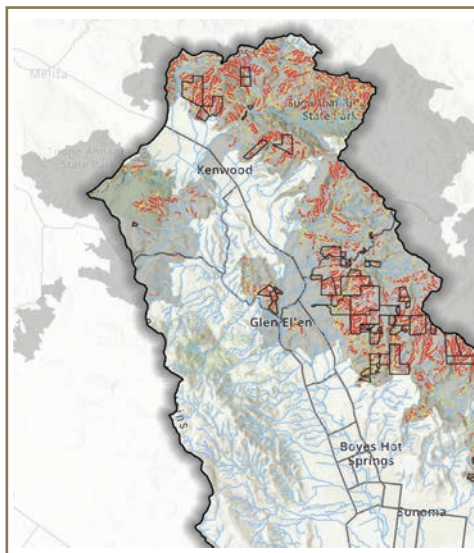
✓ **Sonoma Valley Housing Declaration**
30 organizations, agencies and groups committed to work together to increase, improve, and preserve housing that is affordable for people who live or work in the Valley, within already developed areas, to create diverse, safe, complete neighborhoods

Water Wise, Fire Smart, Wildlife Friendly

Our scientists, fire specialists and data experts are constantly engaged in preparing the Sonoma Valley community for effects of climate change through *water wise, fire smart and wildlife friendly* practices. Our work helps public agencies and private landowners, within and far beyond Sonoma Valley, make informed choices about how they manage land and water.

GIS and Mapping

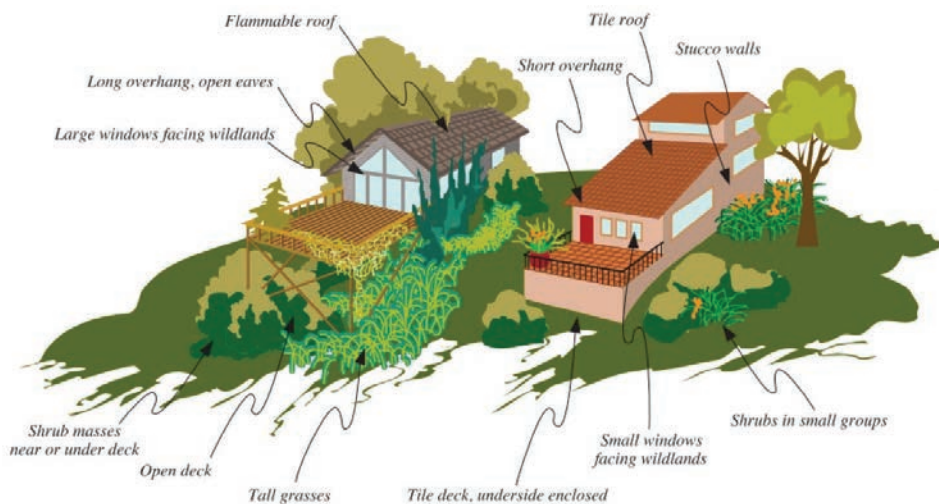
We provide critical GIS support and maps to support large scale fire recovery, erosion control, invasive weed removal, watershed research and community outreach efforts. Our products make government programs and agencies more efficient and inform their decisions on critical issues.



GIS analysis (left) to highlight areas of high erosion risk in northern Sonoma Valley after the 2017 fires. Restoration crews used the results to target specific locations for erosion control work. Funded by the Sonoma County Watershed Task Force.

Restoration

Our restoration team provides expert consulting, permitting, and project implementation for landowners, including those in critical locations for the health of the Sonoma Valley Watershed. This work implements practical, ecologically informed fire preparedness expertise. We design, implement, and manage vegetation management plans, restoration plans, habitat conservation plans and commercial landscapes.



Go to our homepage to download our brochure on fire smart, water wise and wildlife friendly landscaping

LOOKING FORWARD to our 30th

Year Serving Sonoma Valley

RESTORATION PARTNERSHIPS RESEARCH

Moving into our 30th year, we will continue to enhance what people love most about this place—oak-studded hillsides and a close-knit community—while at the same time helping people become more resilient and better adapted to a world of rapid change. These things go hand in hand!

In the coming year, we will...

- Keep nature in mind as the Valley rebuilds and prepares
- Focus on wildlife-friendly fire preparation in the dry season
- Focus on stream-friendly water capture in the rainy season
 - Connect more hearts and minds to the land
 - Continue expanding our Spanish-speaking programs
- Share the wonders of nature with hundreds more kids
 - Celebrate our 30th anniversary!

PRESERVATION EDUCATION

THANK YOU TO OUR 2018 SUPPORTERS

For a complete list, please visit
www.sonomaecologycenter.org/supporters

15,000+ volunteer hours

Your support enables our team of scientists, educators and community leaders to enhance and sustain the ecological health of this remarkable place.

Individuals

\$50,000+

Anonymous (1)
Valerie and Michael Kobal
Jim Lamb

\$10,000-\$49,000

Mac and Leslie McQuown
Garland Lamb

\$5,000-\$9,999

Michael and Mary Ann Hasenstab
Mark Hoffman and Natasha Chand
David Morell and Janet Bruno
Carry Thacher

\$1,000 - \$4,999

Gerald and Teresa Audesirk
Keith and Patty Bongiovanni
Suzanne Brangham
Mark and Linda Brewer
Kate Bucklin
Mary Curtin
Ted Eliot
Ginny Fifield
Katherine Fulton and Katharine Kunst
Margaret and Arthur Grandy
Kathleen Haas
Maud Hallin
Sandy and Alice Horowitz
Ann Iverson
Nancy and Kyle Kirwan

Warren Lyons
Rosemarie and Steve Marks
Ellen McKnight
Julie Santiago
Mike Shane
John and Elizabeth Sheela
Dr. Jerome Solomon and Alice Cornwall
Chris and Sheri Starr
David and Vicki Stollmeyer
George and Judy Weiner
Joe Wible

\$500-\$999

Russ Bair
Mike and Mary Benziger
Homer and Ginny Boushey
Geraldine Brown
Will Bucklin
Dave and Joan Chalk
Amos Clifford
Randy Cook
Brett Cooper and James Fontanilla
Ron and Sandy Dodge
John and Sara Donnelly
Nazar Eliomaily
Gail Ellestad
David Faris
Eric and Janet Hansen
Charesa and Andrew Harper
Peter and Maggie Haywood
Nancy Hwang
Maggie Kaplan
Maya Land
Kathleen Lukefahr-Jewell
Mary and Buck Marcussen

Steve Mullen and Inga Aksamit
Willia and Ned Mundell
Eric Norrbom
Diane Parish and Paul Gelburd
Roger Peters and Stephanie Moulton-Peters
Bonney and Ewing Philbin
Vanessa Rognlien
Michele and Tom Rouse
Jean Schulz
Kat Stephens
Carol Stoye
Gordon Strachan
Theobald Chandler Family Trust
Kristi and Martin Zurauskas

\$100 - \$499

Anonymous (1)
Antonia Adezio
Susie Albrecht
Peter and Adrienne Alcantara
Bonnie Alexander and Ross Sierck
Carl and Kathleen Appellof
Chris Argenziano
Lorraine Ashton
Dean Atchison
Jeff Baker and Diana Craig
Andrew Baldwin
Stephanie Bangs
Jeff and Susan Baptista
Michael and Helen Bates
Meg Beeler and Tom Von Tersch
Lynne and Frederick Bennett
Richard Berry
Todd Board
Cynthia Boyer

Mary Brier
Ilene Briggin
Barbara Buck
Melanie Burquez
Randy Cook
Marilyn Cooper
Bob Cortelyou
Sean Cortright
Clay and Barbara Cowan
Alania Cowie Lindquist
Abigail Dean Bordigioni
Laurie Decker and Chuck Abshear
Deanne DiPietro and Peter Bacot
Gail Dubinsky Spielman
Danielle Erps
Mary and Paul Favaro
Mary Fitzpatrick
Carrie and Dick Fogg
Sandra Fox
Anina Fuller
Ray Gallian
Gemma Gallovich and Ted Cutler
Fay Gallus
Cheryl Green
Carolyn Greene
Rhonda Guaraglia
Lee Hackeling
Bob Hamilton
Celeste and Tom Hanagan
Caitlin Hansen
Jim and Amy Harwood
Sally Hayward
Roger and Kay Heigel
Mike Heiman
Patty and Michael Hickey
Kelly and Randolph Hicks
Richard and Marna Hill
Darla Hillard and Rodney Jackson
David Hough
Annalie Huber
Mark Hummel and Amy Alper
Shannon and Shelly Hutchinson
Sharon and Jim Jackson
Francoise Jacot
Michelle James and David Artale

Erik Jensen
Mark Jobson
James and Shannan Johnson
Julie Jones
Arlene Kallen
Maggie Kaplan
Shawn Kilat
Lynn Krynen
Terry and Karen Larson
Geoff Leonard
Linda Liscom
Ken Litus
Mary Luddy
Mary Mackay and Tom Wilson
Luba Markoff
Sarah Mars and Jason Fessel
Tim and Phyllis Mayer
Howard and Danna McDonough
Beatrice McIntosh
Monica McKey
Jeffrey and Cameron McKinley
Alejandra Mendieta-Bedolla
Justin Merritt
Ralph Metzner
Heidi Mitarai
Marcella Moloshco
Mariko Morikawa
James and Gwen Neary
Ed and Joann Nelson
Byron and Jennifer Nichols
Vicki Nightingale
Jack and Hope Nisson
Daniel O'Connor
Cory O'Donnell
David Ogden
Pamella Olson
Dom and Birgitta Paino
Leighton Parks
Lou Patterson
The Pearse Family Trust
Karen Pedersen
Lewis Perdue
Roger and Fiona Prichard
Donald Pyskaty and Crystal Cox
Christopher Reiger

Laura Rondet
Greg and Linda Rose
Abigail Samoun
Diana Sanson and Ben Compton
Cynthia Scarborough
Esther Schaut
Jewell Schiess
Kathleen Schultz
Judy Scotchmoor and Roland Gangloff
Bryan J. and Pat Sesser
Catherine Sevenau
Shantilal and Snehlata Shah
Dick and Sharon Shlegeris
Sarah Silver
Lawrence and Jacqueline Slayen
Marc and Christina Sloop
Marc Snyder and Mariluisa Betta
Maurine and Mark Solomonson
Margaret Spaulding
David Stagg
Andrew Stempel
Jamie and Andrew Storck
David Strong
Rachel Sussman
Katherine Szabo
Toby and Diane Taylor
Anne Teller
Roy Tennant and Gina Cuclis-Tennant
Janet Tonkin
Craig Tracy
Kate Twain
Carol and Peg Van Camp
Joseph and Deborah Votek
Janet Wedekind
Rich and Deb Whitall
Jeanne Wirka
John Woodward
Robert Wooley
Suzanne Young
Carol Zychowski

Corporate and Organizational Funders

Alexander Wallace Gerbode Foundation
Appleby Foundation
California Invasive Plant Council
California State Parks Foundation
Campbell Foundation
Community Foundation Sonoma County
Dutton Foundation
Elkhorn Slough Foundation
Gaia Fund
Goodman Foundation
Impact100 Sonoma
Kakatu Foundation
Kimball Foundation
Landmark Vineyards
Marin Community Foundation
PG & E Foundation
Patagonia
Redwood Forest Foundation, Inc.
Rose Foundation
Sonoma Clean Power
Sonoma County Vintners Foundation Community Grants
Sonoma Land Trust
Speedway Children's Charities
Stone Edge Farm
Water Foundation



Public Agencies

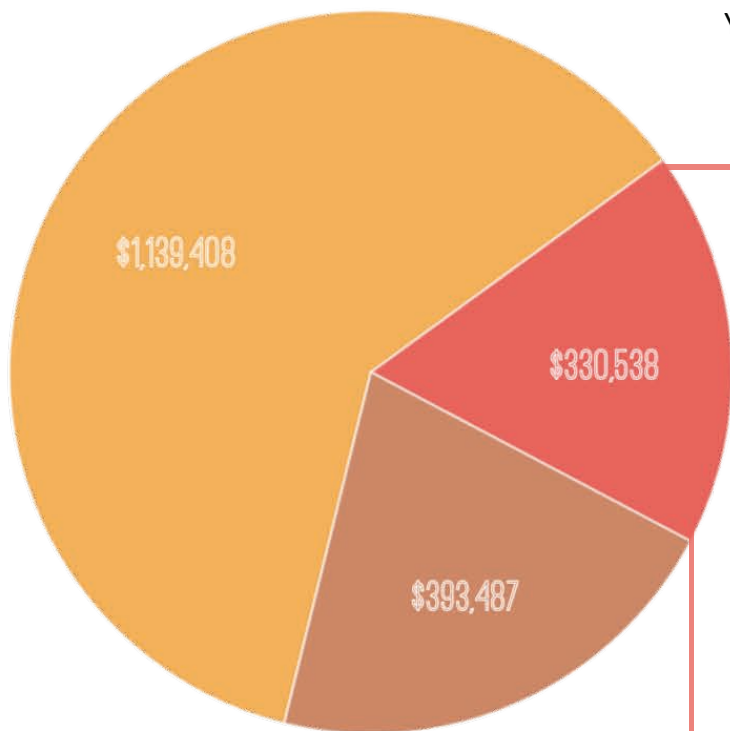
California Department of Fish and Wildlife
California Department of Parks and Recreation
California Coastal Conservancy
California Department of Water Resources
California Wildlife Conservation Board
City of Sonoma
Delta Conservancy
National Oceanic & Atmospheric Administration
San Francisco Bay Regional Water Quality Control Board
Sonoma County Agricultural Preservation and Open Space District
Sonoma County Conservation Action, Just and Resilient Futures Fund
Sonoma County Office of Recovery and Resiliency
Sonoma County Permit and Resource Management Department
Sonoma County Regional Parks
Sonoma County Tourism, Community Investment Fund
Sonoma County Water Agency
Sonoma Valley Groundwater Sustainability Agency

Thank you to our dedicated supporters, members and volunteers for making our work possible. Because of your support, Sonoma Valley and its entire community is healthier and more resilient. The 2019 Nonprofit of the Year award is something we can all be proud of!

2018 Revenue Profile

2018 was a stand-out year for donations because of the community's generosity after the October 2017 fires. The surge of unrestricted funding allowed us to take on critical tasks in our community's fire recovery effort.

Your memberships and donations provide discretionary funding that allows Sonoma Ecology Center to be flexible and responsive to the evolving needs of Sonoma Valley.



MEMBERSHIPS AND DONATIONS \$330,538

PROGRAM FEES \$393,487

GOVERNMENT CONTRACT REVENUE \$1,139,408



Created a priority system and detailed map, adopted by agency responders, for containing toxic ash and debris at burned structures after the fires.



Contained 80% of burned structures within 200 feet of streams.



Funded operations of Sugarloaf Ridge State Park while repairing the structures damaged by the Nunns Fire.



Led 61 Fire Recovery Walks through burned regions for 1,112 participants.



Led in determining the future of Sonoma Developmental Center, ensuring the preservation of the 900-acre campus's open space.

2018 Revenue and Expenses

SONOMA ECOLOGY CENTER STATEMENT OF FINANCIAL POSITION DECEMBER 31, 2018

	2018	2017
ASSETS		
Current assets:		
Cash and cash equivalents	\$ 222,757	\$ 215,712
Accounts receivable	341,852	404,986
Prepaid expenses	36,475	15,000
Total current assets	<u>601,084</u>	<u>635,698</u>
Fixed assets:		
Furniture and equipment	89,068	88,180
Leasehold improvements	90,025	73,159
Vehicles	61,060	74,489
Subtotal	240,153	235,828
Less accumulated depreciation	(137,457)	(169,415)
Net fixed assets	<u>102,696</u>	<u>66,413</u>
Other assets:		
Restricted investments	330,082	351,603
Total assets	<u>\$ 1,033,862</u>	<u>\$ 1,053,714</u>
LIABILITIES AND NET ASSETS		
Current liabilities:		
Accounts payable and accrued expenses	\$ 115,314	\$ 108,931
Grants payable	-	100,000
Deferred revenue	370,446	269,394
Line of credit	84,472	205,874
Total current liabilities	<u>570,232</u>	<u>684,199</u>
Long-term liabilities:		
Grant loan	-	11,893
Total liabilities	<u>570,232</u>	<u>696,092</u>
Net assets:		
Without donor restriction	54,132	(80,577)
With donor restriction	409,498	438,199
Total net assets	<u>463,630</u>	<u>357,622</u>
Total liabilities and net assets	<u>\$ 1,033,862</u>	<u>\$ 1,053,714</u>

SONOMA ECOLOGY CENTER STATEMENT OF ACTIVITIES FOR THE YEAR ENDED DECEMBER 31, 2018

	Without donor restriction	With donor restriction	2018 Total	2017 Total
SUPPORT AND REVENUE:				
Government contract revenue	\$ 1,301,091		\$ 1,301,091	\$ 1,139,408
Memberships and donations	285,226	\$ 45,839	331,065	330,538
In-kind donations	709	426	1,135	-
Program fees	382,763	-	382,763	393,487
Investment income (loss), net of fees	1,141	(16,989)	(15,848)	58,695
Gain (Loss) on disposal of assets	46,281	-	46,281	(57,071)
Reimbursable income	358,569	-	358,569	286,403
Other income	36,772	-	36,772	1,826
Net assets released from restriction	57,977	(57,977)	-	-
Total support and revenue	<u>2,470,529</u>	<u>(28,701)</u>	<u>2,441,828</u>	<u>2,153,286</u>
EXPENSES:				
Program	1,411,890		1,411,890	1,602,527
Management and general	849,005		849,005	356,459
Fundraising	108,459		108,459	107,763
Total expenses	<u>2,369,354</u>		<u>2,369,354</u>	<u>2,066,749</u>
CHANGE IN NET ASSETS	101,175	(28,701)	72,474	86,537
NET ASSETS, BEGINNING	(80,577)	438,199	357,622	287,203
Prior period adjustment	33,534	-	33,534	(16,118)
NET ASSETS, BEGINNING, restated	<u>(47,043)</u>	<u>438,199</u>	<u>391,156</u>	<u>271,085</u>
NET ASSETS, ENDING	<u>\$ 54,132</u>	<u>\$ 409,498</u>	<u>\$ 463,630</u>	<u>\$ 357,622</u>

Board of Directors

David Morell, PhD
President

Environmental Compliance
Consultant, Professor

Ellie Insley,
Vice President

Landscape Architect

Bernie Krause, PhD

Founder, Wild Sanctuary

Ed Colby

Business Development Executive

Breck Parkman

Senior Archeologist,
CA State Parks (ret.)

Nancy Padian, PhD

UC Berkeley School of
Public Health

Parker Bacon

Student Adjunct Board Member



“Sonoma Ecology Center has continued its leadership role in our community over the past 30 years, identifying complex issues and collaborating around effective solutions. We look forward to doing so in our increasingly complex future, helping our Sonoma Valley community carry out local solutions to global challenges of sustainability, climate change, water, land, air and biodiversity.”

– David Morell, PhD, President, Board of Directors

Staff

Richard Dale
Executive Director

Raymond Baltar
Biochar Projects Manager, SEC
Director of Sonoma
Biochar Initiative

Celina Briggs
Human Resources Specialist

Steve Carrera
Sonoma Garden Park Manager

Caitlin Cornwall
Sustainable Sonoma
Project Director
Planning and Partnerships Advisor

Jonny Elhers
Educator/Naturalist

Don Frances
Communications

Garrett Gradillas
Restoration Technician

Wendy Hayes
Research Department

Minona Heaviland
Planner Grants
Development Manager

Deb Hennessy
Bookkeeper

Tina Howard
Operations Director

Kim Jones
Marketing
Sustainable Sonoma Coordinator

Ariana Lease
Restoration Technician

Steven Lee
Research Program Manager

Julia Megna
Education Project Manager

Jason Mills
Restoration Program Manager
Restoration and Fire Ecologist

David Morgan
Restoration Project Manager

Ivana Nedelchev
Bilingual Outreach Coordinator

Tony Passantino
Education Program Manager

Melissa Roberts
Sugarloaf Ridge State Park
Volunteer Coordinator

John Roney
Sugarloaf Ridge State Park Manager

Diana Sanson
Interim Development Director

Alma Shaw
Sugarloaf Ridge State Park
Bilingual Outreach Coordinator &
Events Coordinator

Jonathan Tanis
Sonoma Garden Park
Project Coordinator

John Taylor
Restoration Project Manager

Alex Young
GIS Manager

Kristi Zorauskas
Sonoma Ecology Center
Sugarloaf Ridge State Park
Accountant



Contact Us

Phone: (707) 996-0712
info@sonomaecologycenter.org


Mailing Address

Sonoma Ecology Center
P.O. Box 1486
Eldridge, CA 95431

Website

www.sonomaecologycenter.org

Follow us

[@sonomaecologycenter](https://www.instagram.com/sonomaecologycenter) 

[@SonomaEcologyCenter](https://www.facebook.com/SonomaEcologyCenter) 